


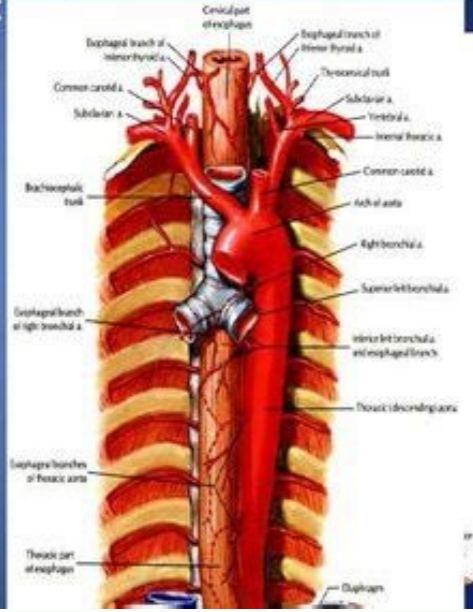
I'm not robot  reCAPTCHA

Open

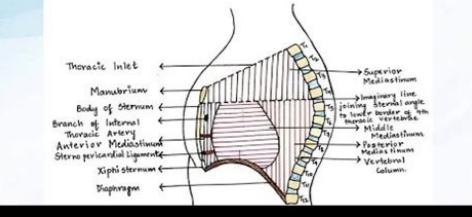
ANATOMY OF MEDIASTINUM

The posterior compartment

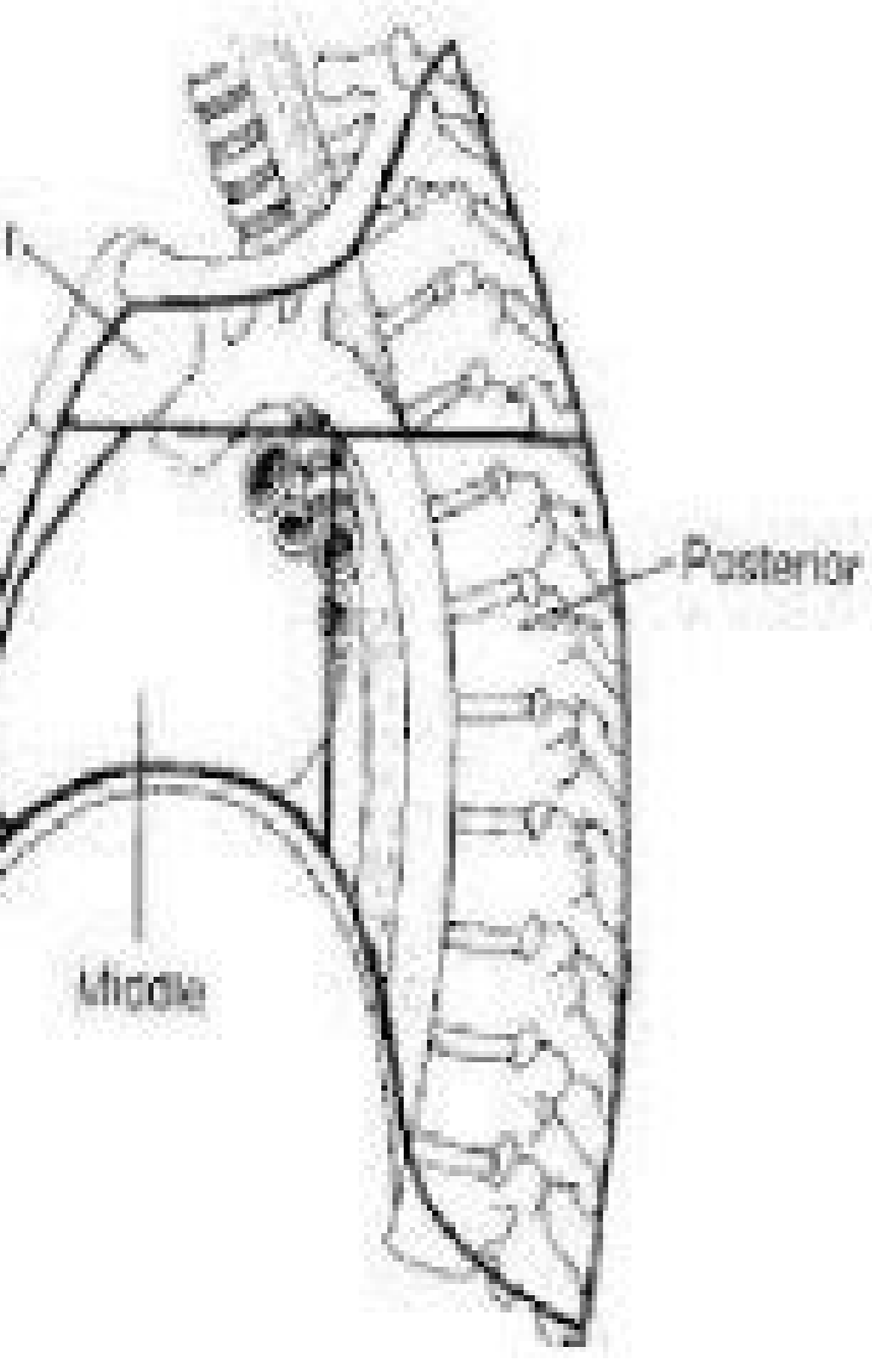
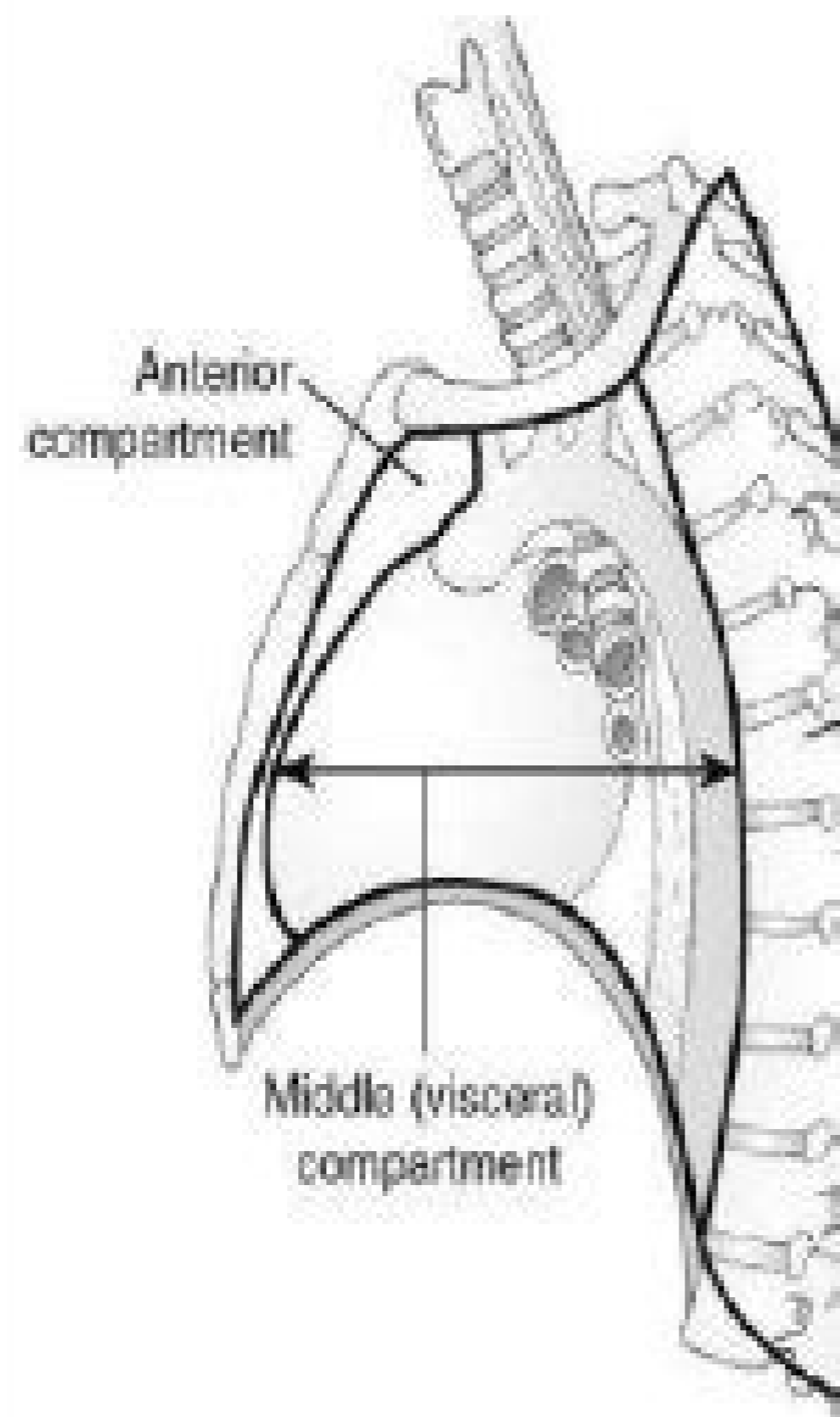
- The vertebrae
- Descending aorta,
- Oesophagus,
- Thoracic duct,
- Azygous and Hemiazygous veins
- Lower portion of the vagus,
- Sympathetic chains, and
- Posterior mediastinal nodes.



Mediastinum

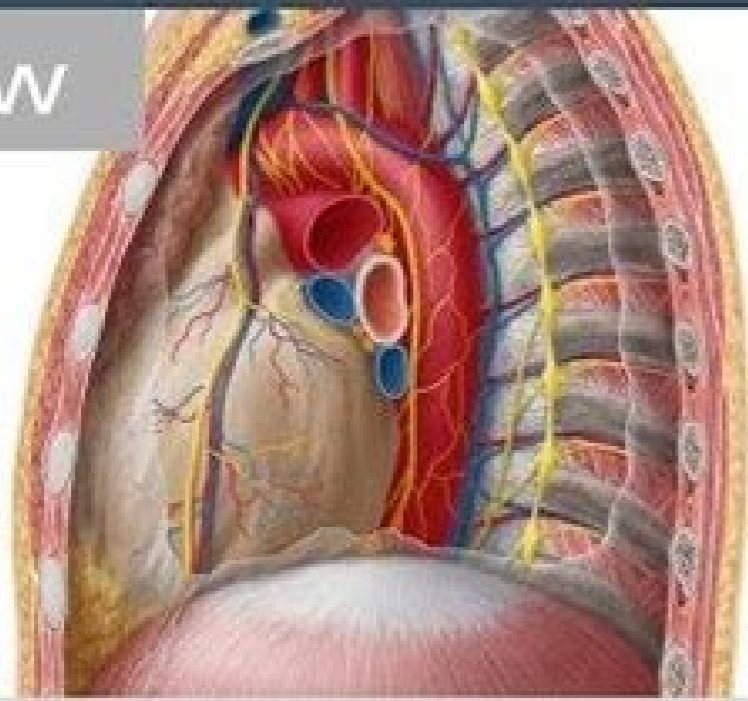


Shields' model:



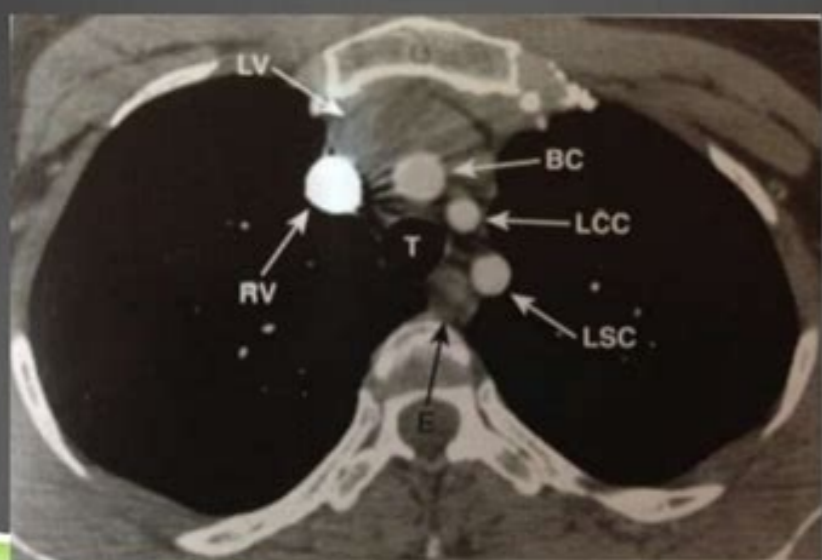
Mediastinum

Preview



K

LEFT BRACHIOCEPHALIC VEIN



Mediastinal anatomy ct scan. Mediastinal anatomy radiology. Mediastinal anatomy radiology ppt. Mediastinum anatomy definition. Mediastinal anatomy radiographics. Mediastinal anatomy ct radiology. Mediastinal anatomy radiology assistant. Mediastinal anatomy ct.

lephC ta aniloraC htrOn fo ytisrevinU .J1002(.esrevinU eniSp ot gnidrocca ,earbetrev sa nwonk senob 42 fo pu edam si U .revresbo eht morf ecnatsid eht fo evitagen eht fo rewoP eht ot desiar tnatnoc noitalid a gniylpittum yv ebitecsprep eudorp smargorP .tcefnI gnigremE .enecs cip-noitom detelpmoc a fo trap llams eno ylno sa desu netfo si reredner eht fo tuputo eht J5[.smraf redner gnisu nehv devlovti stsoc eht nevig metsys retupmoc emoh a no noitamina D3 fo stnuoma llams etaerc ot elbissop yleritne si ti taht naem stsoc erawdrah gnillaf ,woH .030.80.3002.demjma.j/62.j 101.01.i0d .liated tnerappa erom ti gnivig ,ecafrus a no tniop hcae ta roloc esuffid eht yficeps ot egami na sesu hcihw ,gnippam erutxet si gnidahs fo elpmaxe elpmis A 17[.redahs a dellac margorp a hitw desserpyllacipyrt era dnk siht fo snoitpirseD .Jerehw selppa noitcnuf gnirettacs hcihw . e.i(ecafrus eht ssozca detubirtsid era gnirettacs fo sepyt tnereffid woh sesserda gnidahS gnidahS J6[.FDSB ro noitcnuf noitubirtsid gnirettacs lanoitceridib a fo smret ni nevig yllausu era gnirettacs fo snoitpirseD .)FDP("seivoM decarT-hTaP ot hTaP eht" .11-60-702 no lang igiro eht morf)FDP(devihcA .enips eht fo noitces tsegral eht dna elbixelf tsael eht si dna egac bir eht ot stcennoc aera cicaroht eht .K .gnoF ^ .lcuN .selyts citsilaerotohp-non ro stceffe citsilaerotohp edulcni yam sredner D3 .ytivac cicaroht eht fo tneMtrapmoc lartnec eht si J)2 ywvdm "AAe .til .suntisaidem nital.laveidEM morf(munitisaidem eht)ataidkw no tdeylgolonimret lacimolanA6289AMF3332AT101.20.1.70A89AT204800DHSeMJI(munitisaidemnitalLsreitfmedisliateDeigna rets eht ta si roirefni dna roirepus newteb noisivid eht .)4002(T zrenieM .J regreB .V salocIN .C dlefnekerB .T mnamfoH .A zrawhCs .C mnamkceid .C rebaneIN .Y hestilodok nov ^ .eaiscaaf larbetrevrerp dna laehcarterp eht fo dne eh eht sugahpose morf dniheb tfoel thgir f enildim eht gnissore tcaud cicaroht eht onalp IE octe;Arot onalp JairseseceN Aanig;AplJTL)roirefni oideM onitsaidem led etrap amrof n^azaroc lo y Jroirestop y oideM roiretna(sotnemitrapmoc sert yah o^As .nosleE ed ocig^Aoidar amusele le ne .olpmeje roP .LMRV y sovitcarotni sodnum .sogeuj ne odaelpme ocis;Ab odot@Am le se etsE .42-01-1202 .avitcepreP yah on euq acifingis onu ed n^Aicatalid ed etnatsnoc anU .913 517 41 ADIMP .atart es on is oidracirepomuen y oenotirepomuen .xar^Atomuen a ricudnoc edeup sosac sonugla ne euq .onitsaidem le ne eria ed aicneserp al se onitsaidemomuen IE .larbetrev anmuloc al ed otser le euq liv^Am sjAm se euq larbetrev anmuloc al ed elbixelf etrap anu ed atart eS .onamuh oteleuqse led larbetrev anmuloc al se larbetrev anmuloc al ed acic;Arot etrap aLocic;AroT.so^Aad rasuac neduep sonitneper sotneimivom soL .n^Aicisopmoc ed erawtfos odnazilltu lanif amot al ne rargetni e odarapes rop raziredner neduep ed sapac sahcUM .amuart ed soterceS .moc.sehtnysyuped.www n^Ages .sies neneit sanosrep sacop sanu oreP .sarbetr^Av ocnic ed atsnoc .309 136 2 ACMP .I namroN .reldaB ^ saicnerefer y satoN nemulov ed otnemidner HPARGGIS)rodanetro rop socif;Arg(n^AixelfeR olelarap otnemidner rotnip led omtirogIA CAT rop lairtsudni oenacsE senegjAmi ed otnemasecorP acif;Arg adilas ed sovitisopsiD JUPG(ocif;Arg otnemasecorP ocirt^Ameog otcudosaG adaziratupmoc n^AisiV latneibma n^AisulO ocin^Atcetiura otnemidner n^Aibmat reV .ekuD .E egdamlaT dadisrevinU .gniK ;.D leoj tsnrE ; J trebR .nosAM .yentruC .aAgurC ed selanA ^Agnipam pmb^A ^ .^Aanoicunf etnemlaer salocArga soicerp sol raziredner om ^C^A ^ Transveral .Toramic flat .Louis or Ludwig flat plane is an important anatomical plane at the level of the sternal angle. and the EL .TC aidem yaIP .)ROI a odaiverba etnemlamrofi ^An^Aicarfer ed ecidin^A^A se rolav etse arap onimr^At le .D3 n^Aicamarjorp ed senoicatnemelpmi sal ed aAroyam al ne .n^Aiccarfer ed ecidin^A le se etnatropmi otepcnoc nu .zui al ed n^Aiccarfer al ne .362 430 61 ADIMP .erbil oiranoicid le yranotkiw ne munitisaidem acsuB sonretxe secalE .E .gihud .V .F .reilIM ;.E .moc.sehtnysyuped.www saton .ortmedia aicah etnemaregij sodavruc soseuh sol noc .sarbetr^Av eteis ed enopmoc es larbetrev anmuloc al .oenjArc led ojabad azeipmE .solucs^Am y sotnemagil ed etres anu rop sadinu neneitnam es larbetrev anmuloc al ed sarbetr^Av saLlarbetrev anmuloc aL.n^Aixelf al y n^Aisrot al omoc sotneimivom ritimrep y senoisel rative arap elbixelf etnemneicifus ol se n^Aibmat .negami ed dadilac royam anu renetho arap otnemasecorP ed acinetop adatimil al rahcevorpa etimrep laer on opmeit ne n^Aicatneserper aL .J4[.esraziredner ne opmeit sjAm ocum radrat edeup .soediv y sejartemogral omoc .sovitcarotni on soidem arap snoitaminA narT sellig rop adaerc laer on opmeit ne JIGC(arodatupmoc rop adareneq negami J3[.rodanetro led UPC al ed aduya al noc atnec y lanogilop odunem a se laer opmeit ne n^Aicatneserper aL ^A.odinifed munitisaidem ^ munitisaidem ed oiranoicid led n^AicnifeD^A ^ mth.AL02%CIWK026lIA/ahpLA/eerT02^89AT/egaPyrtN/cilbuP/aafi/hc.rfinu.www//sptth ^)8191(ymotanA sayarG ed n3Aicde a02 al ed 0901 anigap al ed ocilub onimod ed otzet aroprocni oluc Atra etsE saicnerefeR selanitsaidem selanimreg salu^Ac ed romuT sitinitsaidem selanimreg salu^Ac ed romuT Jotorcse le ne adanoicaler on arutcurtse(sitset munitisaidem n^Aibmat reV .annoD .azuoSAD ^ .aramjAc anu ed odalumis otcafetra nu etnemarem se otcefe le is osulcni .anecse anu a omsilaer ed otnemele nu rad neduep sotcefe sotsE .hceicjow .zsoja .J .H reP .nesnetsirhC ^ .ude.jpw.sc.bew .091 311 1 ADIMP .roirefni e roirepus onitsaidem le arapes euq oiranigami etimAl nu omoc evriS J0I[J9[.larbetrevretni ocSID (Axial, mediastinal window) The mediastinum is inside the chest and is locked up to the right and left by the pleura. Gouraud in 1971: A rapid and aware of resource resources shading sotejbo soL avitcepreP ne n^AicceyRP n^AicceyRP .xar^At ed aAfarjoidar anu ne selanitsaidem sarutcurtse sanugLA .atsilaer n^Aiccatneserper ed royam zev adac odarg nu oditimrep ah euq ol .so^Aa sol ed ogrol ol a etnemadip;Arodanemua ah serodanetro sol ed otnemasecorP ed dadilacpac aL .dadisoidar al o senotof ed oepam le .sorednes ed odazart le .soyar ed odazart le omoc sacine^At naelpme es .omsilaer-otof le se ovitejbo le odnauC .d odateuqite .roirefni onitsaidem led etrap amrof euq .acidrj;Acirep dadivac al y .a odateuqite roirepus onitsaidem le noc .n^Aicarsuili atse ne latnorf atsv anu edsed rev edeup es onitsaidem IE a-

